

## Regular Library Programs

### FREE PAPERBACK BOOK SWAP

Choose your next great read from our collection of paperbacks and bring in books that you've finished.

### TUESDAY CLUBS

#### Geography Club

Join us on the 2nd Tuesday of the month at 2 p.m. We'll pick a different country each month and learn about its geography, culture and language.

#### Lego Club

Builders wanted! We'll spread out our Legos every 3rd Tuesday at 2 p.m. and then display your creations the following month!

#### Coding Club

Join us for games and challenges to learn coding languages and logic every 4th Tuesday at 2 p.m.

### CRAFTY COFFEE

Bring your knitting, crocheting or other hand project and join us for an hour of socializing every Wednesday morning from 11 a.m.-noon.

### STORY TIME

Join us for songs, stories, and crafts every Thursday morning at 10:30 a.m. Please register, so that we may prepare enough crafts for the children.



## WiFi

Provided free by MWR

1. Select "Navy\_MWR\_Wifi"
2. Enter passcode: "navy.mwr"
3. Click "Accept"



### Address

Oriskany St.  
Bldg. 949 2F  
(headquarters bldg.)

### Phone

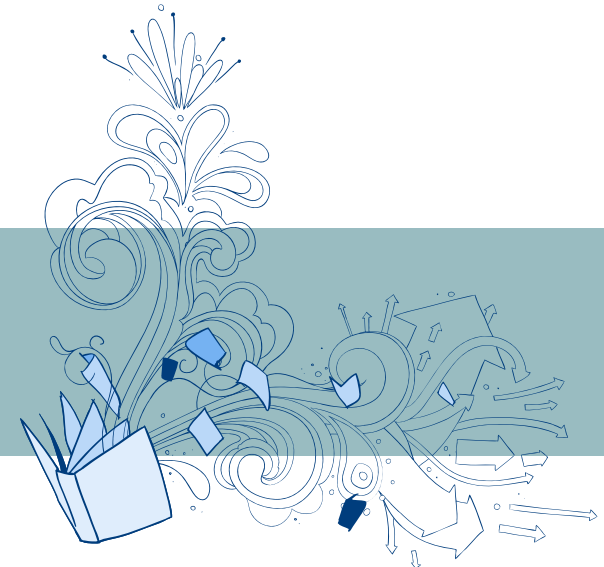
264-3776  
0467-63-3776

### Hours

Mon-Fri: 10 a.m.-6:30 p.m.  
Sat: 10 a.m.-5:30 p.m.  
Closed holidays



# NAF ATSUGI LIBRARY



## Account and Check-Out

Library accounts are established in the sponsor's name for the family unit; each family is issued ONE library card. Family members can use their military IDs to check out material.

### Loan Periods and Limits

Format	Number	Loan Period	Renew
Books	30	30 days	Yes
Audiobooks	5	30 days	Yes
Music CDs	5	14 days	No
Movies	5	14 days	No
Video Games	5	14 days	No

Items are only renewed once if no one else has reserved them.

## OVERDUE ITEMS LIST IS SENT TO CMC OF EACH SPONSOR'S COMMAND

Accounts must be clear of any overdue material before any additional items can be borrowed. Items left in the drop box may not be cleared until the following day.

Hold requests can be placed for materials out on loan or from other libraries. Items will be held for 72 hours following notification.

Check your due dates, renew your materials and request items from our catalog!

Library catalog: <http://www.navylibrariesjapan.org/>

User Name: \_\_\_\_\_

Password: \_\_\_\_\_

## Internet

Users must check out computers at the circulation desk. They are checked out on a first-come, first-served basis. All dependents must have parental approval on file before using the Internet. The library has two OneNet computers and 14 commercial computers available for use.



### Business Services

Printing	Black & White	\$.05 per one-side
	Color	\$.25
Photocopying	Black & White	\$.10 per side
	Color	\$.25 per page
Scanning		\$.25 per page
Faxing	Sending: US & Japan	\$1.00 per page
	Receiving	\$.25 per page
Laminating		\$.25 per page

## Cultural Craft Classes

Class	Description	Date & Time	Class Fee	Supplies
Chigiri-e	Torn paper picture craft	2nd & 4th Thursdays 11:30 a.m.-1 p.m.	\$10	Kits are ¥500-1500. Frames are ¥100.
Ikebana	Japanese flower arranging	2nd & 4th Mondays 10:30 a.m.-noon	\$10	¥1,000 or \$9 for flowers
Oshi-e	Pressed paper/cloth picture crafts	3rd Friday 10 a.m.-noon	\$10	Basic kits are \$14. Frames are ¥450. Instructor brings a catalog to class for students to order additional kits.
Sado	Tea Ceremony	3rd Wednesday 4:45 p.m.-6:45 p.m.	\$30	Must register 24 hours prior to class.

## Digital Library

Check out our large digital collections! Audiobooks, eBooks, language apps, homework help and practice tests, plus much, much more!

Navy Digital Library: <http://navymwrdigitallibrary.org/>

### Transparent Language

The most complete language learning solution available. An account is needed to track your progress as you participate in interactive lessons in more than 90 languages.

### Overdrive

Our largest collection of e-books and audiobooks offers access to the CNO's and Commandant's Reading Lists, classic literature, and current fiction and non-fiction best sellers. Customers will need to create an Overdrive borrower's account to check out and transfer digital content to e-readers, tablets, smartphones and more.

